

## PLC Interlock Controls ACIL50



Fully customisable PLC control panel with capability to interconnect with any site specific interfaces and auxiliary equipment to create complete interlocking solution.

### ▲ Fully Expandable

With the modular interlock controls based on Siemens standard programmable hardware, each control panel can be expanded to control a large number of doors, depending on the exact customer requirements.

### ▲ Intelligent Interfaces

With the capability of interfacing with BMS systems on site, each control panel can be programmed to provide a wide range of outputs so that the maintenance department always has the full knowledge of what the interlock doors are doing. This includes all various alarm states, such as 2 doors open at the same time, a door

being held open for an unacceptably long period of time, a door forced open without the access control system being activated, etc. The ACIL50 can also be connected to the site Access Control system to provide information on the usage of the doors in the controlled environment.

### ▲ Numerous Configurations

As all software is programmed, tested, commissioned and verified by Actec, any combination of doors and interlock operation is possible, ranging from very simple 2 door material airlocks up to multi-door, multi-rule cascading personnel airlocks with privacy buttons on certain doors, swipe card readers, audible alarms, door automations and so on. Plus, the ACIL50 can be configured to interface with a site specific piece of equipment to prevent a door from operating if a particular machine is working, or stopping the machine if someone passes into the area through the interlocked door.

Call us:

1890 274 273

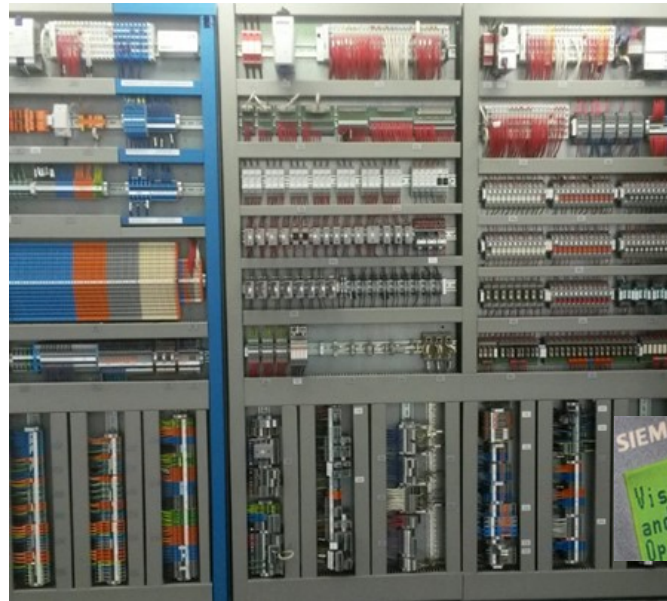
Visit us:

Unit C Purcellsinch Industrial Estate,  
Old Dublin Road, Kilkenny, R95 EH52

Email / Website:

admin@actec.ie  
www.actec.ie

# Interlocks / Door Hardware / Activation / Safety Devices



## Technical Specifications:

Power:	230Vac / 24Vdc (12Vdc only on demand)
Max Current Consumption:	1A @ 230Vac
Traffic light Output:	250mA @ 24Vdc per door
Lock Output:	1A @ 24Vdc per door
No. of Doors Controlled:	2 to 20 doors
Control Panel Dimensions:	600 x 600 x 200mm typically
Enclosure Construction:	Powder Coated Steel
Working Temperature:	-5° to + 50° C
Ingress Protection:	IP65 Typically
Inputs:	Hard Wired Connection Door Status Activation Privacy Button Access Control Auxiliary Equipment

## Outputs:

Locks  
Indicators  
Door Automation Interface  
BMS System  
Auxiliary Equipment



## Benefits of using ACIL50

- Very robust assembly
- Ease of troubleshooting and expansion at post-installation stage
- Easy to follow, comprehensive wiring diagrams
- Hard wired connections allow for easy addition of extra hardware
- Multiple interlocks can be grouped into one control panel, thereby reducing the cost per interlock system
- Large number of doors can be controlled easily
- Comprehensive connections to client equipment

Contact us for more information